

# Inter Entity Trade

## For Sage ERP Accpac



- ❌ Do you manage multiple entities which trade with each other?
- ❌ Are you struggling to keep everything in balance?
- ❌ Are efficiency and growth impeded by processing routine transactions?
- ❌ Are you expanding into new markets, needing visibility across operations while using your standard business processes?

### What is Inter Entity Trade?

Developed by Orchid Systems, Inter Entity Trade automates the flow of transactions when partner companies, branches, divisions etc buy and sell between each other. Reciprocal documents are created according to business rules you set up: when you initiate a transaction in one company, Inter Entity Trade makes the corresponding entries in the other company. No need to duplicate it for the other company.

Globalization enables organizations to expand and operate across borders. This results in a proliferation of related companies trading with each other and the need to keep track of items and services, purchase and sales orders, shipments and receipts, invoices and taxes. Inter Entity Trade automates this and increases the accuracy of data, improves efficiency and provides better visibility across a group of companies.

### The Benefits of Inter Entity Trade

- Automates and streamlines business processes
- Improves visibility of operations across a group of companies
- Input transactions once and replicate across companies
- Enhances productivity and efficiency

### Inter Entity Trade Features:

- Map which companies will trade with each other
- Create transactions from:
  - AP Invoices to AR Invoices
  - AP Credit Notes to AR Credit Notes
  - AR Invoices to AP Invoices
  - AR Credit Notes to AP Credit Notes
  - OE Orders to PO Orders
  - OE Shipments to PO Receipts
  - OE Invoices to PO Invoices
  - OE Credit Notes to PO Returns
  - PO Orders to OE Orders
  - PO Receipts to OE Shipments
  - PO Invoices to OE Invoices
  - PO Returns to OE Credit Notes
- Map IC Items and GL Accounts if not identical across entities
- Map information to flow through from document to document
- Override IC Categories and IC Locations to easily identify intergroup transactions for consolidated reporting
- Comprehensive audit logging to ensure that all transactions are accounted for

### Minimum Requirements:

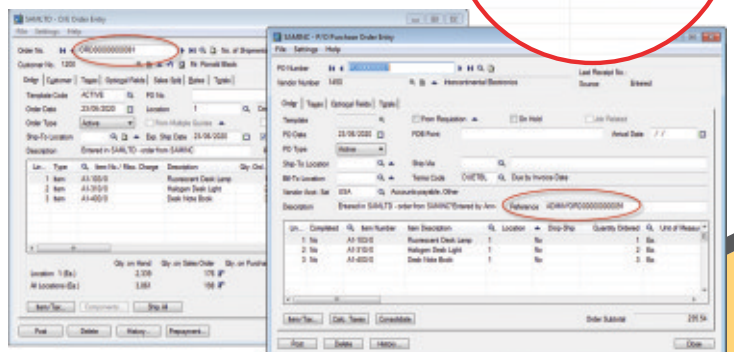
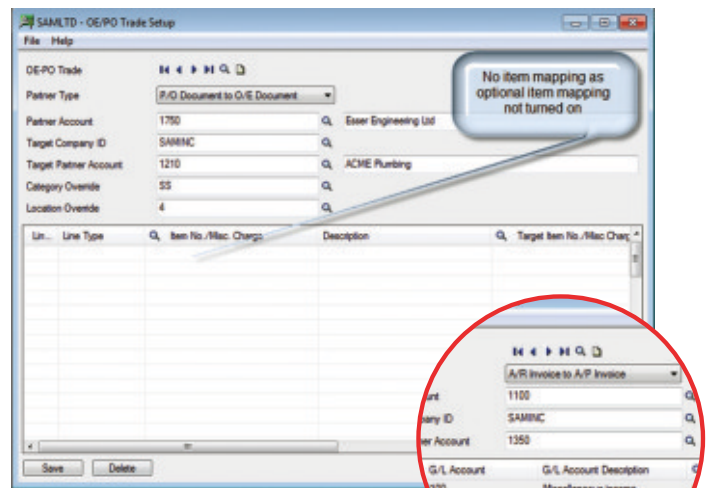
Inter Entity Trade version 6.0 requires Sage ERP Accpac version 6.0 System Manager, General Ledger, Accounts Receivable and Accounts Payable. Inter Entity Trade optionally works with Sage ERP Accpac version 6.0 Order Entry, Inventory Control and Purchase Orders.

Copyright © 2011 Orchid Systems. All rights reserved.

All trademarks are registered trademarks or trademarks of their respective companies.



For further details contact your Sage Software Solution Provider...



2/273 Alfred Street, North Sydney, NSW, Australia, 2060  
Tel: +61-2-9925-0383 / Fax: +61-2-9955-3926  
www.orchidsystems.biz / info@orchidsystems.biz