

Inter Entity Transactions

For Sage ERP Accpac



Do **you** find that you are **struggling** to keep everything in balance?
 Do you run **multiple entities**, including branches, divisions, departments, funds, projects, trusts or companies within one or across **Accpac databases**?
 Increase the **accuracy** of your financial data.

What is Inter Entity Transactions?

Developed by Orchid Systems, Inter Entity Transactions facilitates doing business and transferring funds between entities. Entities can include branches, divisions, departments, funds, projects, trusts or multiple companies held within one or across Accpac databases. Inter Entity Transactions increases the accuracy of your financial data, streamlines business processes and provides tight control over transactions spanning multiple entities.

The due to and due from transactions are automatically generated and complex routes can be followed when there are no direct inter entity account relationships between the transacting entities.

Detailed reports and processes ensure entities balance at all times, increasing the timeliness and accuracy of information whilst saving keystrokes! The Inter Entity Transactions module will ensure that each entity stays in balance and will work on all General Ledger transactions regardless of whether they originated from any subsidiary ledger, the General Ledger, a third party module or an external system which has created General Ledger batches.

The module is well suited to non-profit organizations with Fund Accounting requirements and any organization with loan accounts which should mirror each other as a result of inter department, inter branch, inter divisional or inter company processing requirements within one or across Accpac Databases.

The Benefits

- Accuracy of financial data.
- Streamlines Business processes.
- Complex routes can be followed.
- Automatic due to and due from transactions.
- Keep each entity in balance.

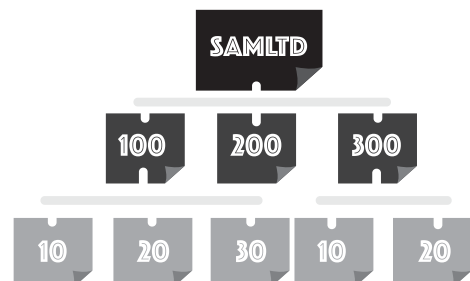
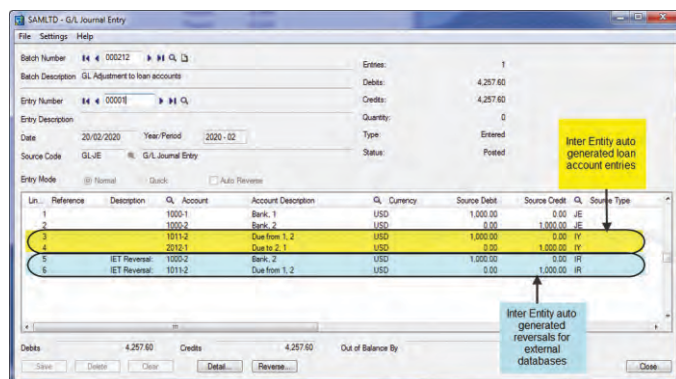
Cash Management*

Where organisations have multiple entities and bank accounts and need to transfer funds between them, Inter Entity Cash Management automates the process in Accpac. No longer do you need to make all the duplicating transaction entries across companies.

All transactions are routed via predefined Inter Company loan accounts so they are kept in balance automatically.

- AR Receipts across companies
 - Allocate a receipt to a customer in one company and have the receipt go into a bank account in another company
 - Bank a receipt into a bank account in one company and allocate it against AR transactions which originated in other companies
 - Allocate a miscellaneous receipt to GL accounts in one or more companies whilst receipting the funds into a bank account in another company
 - Combined AR Trial balance across multiple companies
- AP Payments across companies
 - Process a payment against a vendor in one company and have the payment come out of a bank account in another company
 - Process an AP payment out of a bank account in one company and allocate it against AP transactions which originated in other companies
 - Allocate a miscellaneous payment to GL accounts in one or more companies whilst drawing the funds from a bank account in another company
 - Combined AR Trial balance across multiple companies
- Bank transfers between bank accounts across companies.

*Cash Management is included only in the multi database version of Inter Entity Transactions.

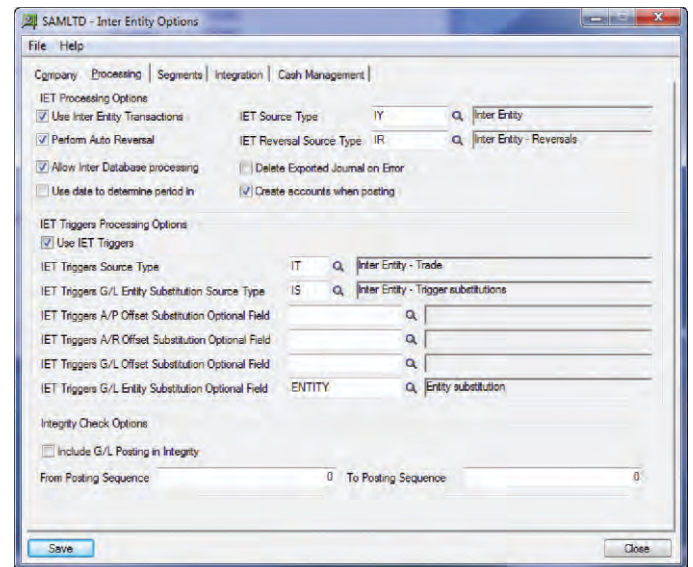




Streamline business processes while **saving** keystrokes and time.
Tighten **control** over transactions spanning multiple entities.
Use Inter Entity Transactions to ensure your entities are always **in balance**.

Key Features

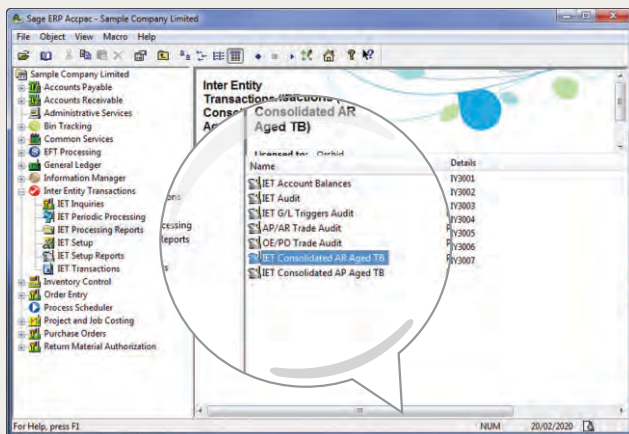
- Post transactions based on date rather than fiscal period to support entities with different Period and Year Ends.
- Supports transactions between entities with different functional currencies.
- Supports standard Accpac functionality such as GL Auto Allocation and GL Reversing Entries.
- Works within one and/or across Accpac databases.
- Due to / due from transactions generated automatically.
- Works on all General Ledger transactions, regardless of where they originated from.
- User definable routes, including complex routes across multiple entities.
- Developed in the Accpac SDK.
- Standard Accpac security, customization capabilities, import/export, data integrity checking and more!
- Automatically trigger additional transactions (GL, AR and AP) to automate complex Inter Entity transactions.
- Account Substitution to reduce the need to replicate accounts in multiple entities.
- Accpac look and feel.
- "Auto Reverse" entries destined for other companies.
- Generate batches for Import into remote "offline" company databases.
- Balance transactions at the segment level (rather than just the Account level) for one or more segments.
- Optionally set GL Accounts and GL Transactional Optional fields to be auto created in target databases.
- Optionally set batches in target databases to autopost.



"They (prospective Accpac Users) are also looking at a competing product, but their add on to do inter segment balancing is US \$4,500 plus two days of training from the developer.

I was able to setup a compelling demo in a couple of hours using the Orchid add on without any training from the developer ...go figure! I thought the documentation was very good with nice examples...."

Accpac Solution Provider quote...



Minimum Requirements

Inter Entity Transactions version 6.0 requires Sage ERP Accpac version 6.0 System Manager and General Ledger.

Further details from your Sage Software Solution Provider.

Copyright © 2011 Orchid Systems. All rights reserved.
All trademarks are registered trademarks or trademarks of their respective companies.

